

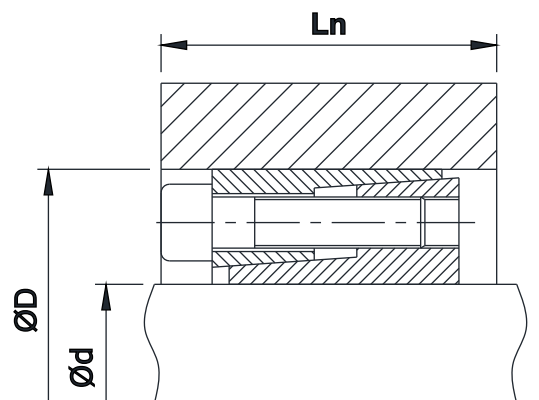
Locking Assembly - Model N7035



◆ Features :

- Two part Locking Assembly
- Torque Transmission Capacity: Medium
- Single Taper Design
- Self-Centering
- Self-Locking
- Slight Axial displacement of Hub
- Easy Mounting & Removal

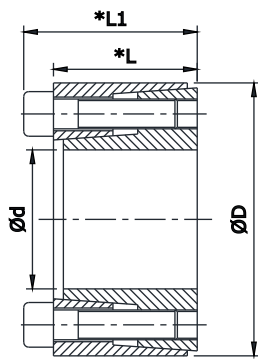
◆ Mounting Example:



◆ Tolerance & Surface finish:

- A good Surface finish by Machine tool is sufficient. Maximum allowable Surface finish $R_a \leq 3.2\mu\text{m}$
- Maximum Permissible Tolerance for Shaft is h8 & for Hub bore is H8.

Locking Assembly Model N7035



- d =Inner diameter
- D =Outer diameter
- L1 =Overall width with screws
- L =Overall width without screws
- I =Clamping length
- S =Clamping thread
- Ma =Tightening torque of the screws
- Mt =Transmissible torque at given Ma
- P' =Surface pressure on shaft at given Ma
- P =Surface pressure on hub at given Ma
- Pax =Axial Thrust
- W =Weight

d x D mm	L mm	L1 mm	Transmissible Torque Nm (Mt)	Axial Thrust KN (Pax)	Surface Pressure on		Tightening Screws DIN912 12.9 No. x size(s)	Tightening Torque Nm (Ma)	Weight Kg (W)
					Shaft N/mm ² P'	Hub N/mm ² P			
6 x 16	11	13.5	6	2	152	56	3 x M2.5	1.2	0.012
6.35 x 16	11	13.5	6	2	142	56	3 x M2.5	1.2	0.012
7 x 17	11	13.5	8	2	127	56	3 x M2.5	1.2	0.013
8 x 18	11	13.5	10	3	112	51	3 x M2.5	1.2	0.015
9 x 20	13	15.5	15	3	122	56	4 x M2.5	1.2	0.020
9.53 x 20	13	15.5	15	3	112	56	4 x M2.5	1.2	0.020
10 x 20	13	15.5	15	3	112	56	4 x M2.5	1.2	0.019
11 x 22	13	15.5	18	3	102	51	4 x M2.5	1.2	0.024
12 x 22	13	15.5	20	3	91	51	4 x M2.5	1.2	0.022
14 x 26	17	20	36	5	107	56	4 x M3	2.1	0.039
15 x 28	17	20	41	5	102	51	4 x M3	2.1	0.044
16 x 32	17	21	71	8	133	66	4 x M4	4.9	0.067
17 x 35	21	25	77	8	122	61	4 x M4	4.9	0.090
18 x 35	21	25	82	8	117	61	4 x M4	4.9	0.087
19 x 35	21	25	87	8	112	61	4 x M4	4.9	0.083
20 x 38	21	26	153	15	143	77	4 x M5	9.7	0.100
22 x 40	21	26	163	14	133	71	4 x M5	9.7	0.110
24 x 47	26	32	256	21	144	77	4 x M6	17	0.200
25 x 47	26	32	267	21	138	77	4 x M6	17	0.190
25.4 x 47	26	32	272	21	133	77	4 x M6	17	0.180
28 x 50	26	32	451	31	190	103	6 x M6	17	0.220
30 x 55	26	32	482	31	179	97	6 x M6	17	0.270
32 x 55	26	32	513	31	169	97	6 x M6	17	0.250
35 x 60	29	37	748	41	169	97	8 x M6	17	0.360
38 x 65	29	37	820	41	159	92	8 x M6	17	0.430
40 x 65	29	37	861	41	149	92	8 x M6	17	0.400
42 x 75	36	44	1236	57	170	93	6 x M8	41	0.670
45 x 75	36	44	1339	57	160	93	6 x M8	41	0.630
48 x 80	36	44	1906	77	201	118	8 x M8	41	0.740
50 x 80	36	44	1957	77	191	118	8 x M8	41	0.700

Dimensions/Design subject to modifications without any prior intimation.