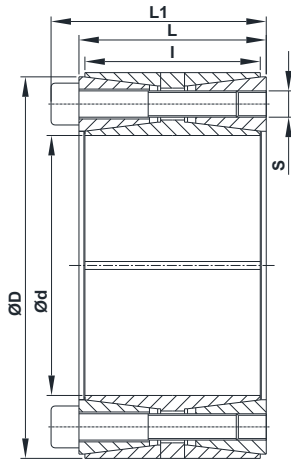


Locking Assembly Model N 7015.0



- d = Inner diameter
 D = Outer diameter
 L1 = Overall width with screws
 L = Overall width without screws
 I = Clamping length
 S = Clamping thread
 Ma = Tightening torque of the screws
 Mt = Transmissible torque at given Ma
 P' = Surface pressure on shaft at given Ma
 P = Surface pressure on hub at given Ma
 Pax = Axial Thrust
 W = Weight

d x D mm	I mm	L mm	L1 mm	Transmissible Torque Nm (Mt)	Axial Thrust KN (Pax)	Surface Pressure on		DIN912 12.9 No. x size(s) x Lb	Tightening Torque Nm (Ma)	Nos. of releasing Threads	Weight Kg (W)
						Shaft N/mm ² P'	Hub N/mm ² P				
100 x 145	60	65	77	14244	285	198	136	10 x M12 x 55	145	2 x 3	4.1
110 x 155	60	65	77	15668	285	180	127	10 x M12 x 55	145	2 x 3	4.4
120 x 165	60	65	77	20511	342	198	144	12 x M12 x 55	145	2 x 3	4.8
130 x 180	68	74	86	27775	427	197	142	15 x M12 x 60	145	2 x 3	6.5
140 x 190	68	74	86	35894	513	220	162	18 x M12 x 60	145	2 x 3	7
150 x 200	68	74	86	38458	513	205	154	18 x M12 x 60	145	2 x 3	7.4
160 x 210	68	74	86	47858	598	224	171	21 x M12 x 60	145	2 x 3	7.8
170 x 225	75	81	95	59620	701	222	168	18 x M14 x 65	230	2 x 3	10
180 x 235	75	81	95	63127	701	210	161	18 x M14 x 65	230	2 x 3	10.6
190 x 250	88	94	108	74038	779	186	141	20 x M14 x 75	230	2 x 4	14.3
200 x 260	88	94	108	93522	935	211	163	24 x M14 x 75	230	2 x 4	15
220 x 285	98	104	120	105616	960	189	146	18 x M16 x 90	355	2 x 4	19.8
240 x 305	98	104	120	153624	1280	231	182	24 x M16 x 90	355	2 x 4	21.4
260 x 325	98	104	120	173360	1334	222	178	25 x M16 x 90	355	2 x 5	23
280 x 355	120	126	144	216499	1546	200	158	24 x M18 x 110	485	2 x 4	35.2
300 x 375	120	126	144	241629	1611	195	156	25 x M18 x 110	485	2 x 5	37.4
320 x 405	135	142	162	333337	2083	199	157	25 x M20 x 120	690	2 x 5	51.3
340 x 425	135	142	162	354170	2083	187	150	25 x M20 x 120	690	2 x 5	54.1
360 x 455	158	165	187	463312	2574	186	147	25 x M22 x 130	930	2 x 5	75.4
380 x 475	158	165	187	489052	2574	176	141	25 x M22 x 130	930	2 x 5	79
400 x 495	158	165	187	514791	2574	167	135	25 x M22 x 130	930	2 x 5	82.8
420 x 515	158	165	187	648637	3089	191	156	30 x M22 x 130	930	2 x 5	86.5
440 x 545	172	180	204	799628	3635	192	155	30 x M24 x 150	1200	2 x 5	110
460 x 565	172	180	204	835974	3635	184	150	30 x M24 x 150	1200	2 x 5	114
480 x 585	172	180	204	930476	3877	188	154	32 x M24 x 150	1200	2 x 5	119