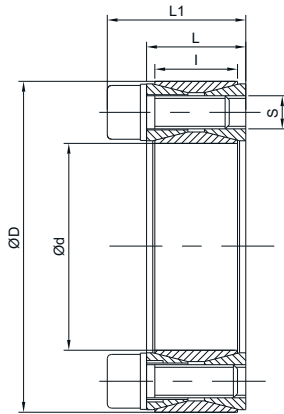


## Locking Assembly Model N 7012.0



- d =Inner diameter
- D =Outer diameter
- L1 =Overall width with screws
- L =Overall width without screws
- l =Clamping length
- S =Clamping thread
- $M_a$  =Reduced tightening torque of the screws
- $M_t$  =Transmissible torque at given  $M_a$
- $P'$  =Surface pressure on shaft at given  $M_a$
- $P$  =Surface pressure on hub at given  $M_a$
- $M_b \text{ max.}$  =Max. bending moment
- $P_{ax}$  =Max. Axial Thrust at max. bending moment
- W =Weight

d x D mm	l mm	L mm	L1 mm	Tightening screws		Transmitting Torque Nm (Mt)	Axial Thrust KN (Pax)	Mbmax. Nm	Surface pressure on		Weight Kg (W)
				DIN 912 12.9 No. x size(s) x L <sub>b</sub>	Tightening Torque Nm (Ma)				Shaft N/mm <sup>2</sup> P'	Hub N/mm <sup>2</sup> P	
100 x 145	26	33	47	14 x M12 x 30	125	9591	126	7210	196	135	2.01
110 x 155	26	33	47	14 x M12 x 30	125	10488	127	7840	177	126	2.15
120 x 165	26	33	47	16 x M12 x 30	125	13004	157	8960	184	134	2.35
130 x 180	34	38	52	20 x M12 x 35	125	17522	206	11310	162	117	3.51
140 x 190	34	38	52	22 x M12 x 35	125	20661	257	10160	164	121	3.85
150 x 200	34	38	52	24 x M12 x 35	125	24046	297	9020	167	125	4.07
160 x 210	34	38	52	26 x M12 x 35	125	27674	332	7870	169	129	4.3
170 x 225	38	44	60	22 x M14 x 40	190	32486	286	21570	157	119	5.78
180 x 235	38	44	60	24 x M14 x 40	190	37391	358	18960	161	123	6.05
190 x 250	46	52	68	28 x M14 x 45	190	45890	411	24070	147	111	8.25
200 x 260	46	52	68	30 x M14 x 45	190	51590	471	21150	149	114	8.65
220 x 285	50	56	74	26 x M16 x 50	295	66374	525	32670	146	112	11.22
240 x 305	50	56	74	30 x M16 x 50	295	83094	671	20330	153	120	12.2
260 x 325	50	56	74	34 x M16 x 50	295	101512	770	16810	159	127	13.2
280 x 355	60	66	86.5	32 x M18 x 60	405	124233	844	38440	140	111	19.2
300 x 375	60	66	86.5	36 x M18 x 60	405	149101	980	24820	146	117	20.5
320 x 405	72	78	100.5	36 x M20 x 70	580	207104	1273	37220	149	118	29.6
340 x 425	72	78	100.5	36 x M20 x 70	580	219216	1244	57920	140	112	31.1
360 x 455	84	90	116	36 x M22 x 80	780	282418	1513	74630	138	109	42.2
380 x 475	84	90	116	36 x M22 x 80	780	297102	1495	87000	130	104	44
400 x 495	84	90	116	36 x M22 x 80	780	311738	1365	150460	123	99	46
420 x 515	84	90	116	40 x M22 x 80	780	362587	1668	93580	130	106	50
440 x 545	96	102	130	40 x M24 x 90	1000	442836	1946	113140	126	102	64.6
460 x 565	96	102	130	40 x M24 x 90	1000	461680	1853	177330	121	98	67.4
480 x 585	96	102	130	42 x M24 x 90	1000	504497	1982	168140	121	99	71