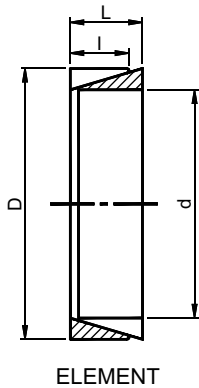


Locking Element Model N8006

d X D mm	L mm	l mm	Pre load force Pt N	Total locking force Pa N	Torque Nm (without slit)	Axial Thrust KN	Distance W before tightening				Surface diameter Inside Outside		Surface pressure on	
							1	2	3	4	d1 mm	D1 mm	Shaft N/mm ²	Hub N/mm ²
9 x 12	4.5	3.7	7650	15600	8	1.76	2.5	2.5	3	4	9.1	11.9	140	105
10 x 13	4.5	3.7	7000	15600	10	1.91	2.5	2.5	3	4	10.1	12.9	135	105
12 x 15	4.5	3.7	7000	15600	11	1.91	2.5	2.5	3	4	12.1	14.9	115	90
13 x 16	4.5	3.7	6500	15600	13	2.02	2.5	2.5	3	4	13.1	15.9	110	90
14 x 18	6.3	5.3	11000	25400	22	3.18	3.5	3.5	4.5	5.5	14.1	17.9	115	90
15 x 19	6.3	5.3	10800	25400	24	3.24	3.5	3.5	4.5	5.5	15.1	18.9	110	85
16 x 20	6.3	5.3	10000	25400	27	3.42	3.5	3.5	4.5	5.5	16.1	19.9	105	85
17 x 21	6.3	5.3	9600	25400	30	3.51	3.5	3.5	4.5	5.5	17.1	20.9	105	85
18 x 22	6.3	5.3	9150	25400	32	3.61	3.5	3.5	4.5	5.5	18.1	21.9	100	80
19 x 24	6.3	5.3	12500	36000	49	5.22	3.5	3.5	4.5	5.5	19.2	23.8	140	110
20 x 25	6.3	5.3	12000	36000	53	5.33	3.5	3.5	4.5	5.5	20.2	24.8	135	105
22 x 26	6.3	5.3	9000	36000	66	6	3.5	3.5	4.5	5.5	22.2	25.8	135	115
24 x 28	6.3	5.3	8400	36000	73	6.13	3.5	3.5	4.5	5.5	24.2	27.8	130	110
25 x 30	6.3	5.3	10000	36000	72	5.77	3.5	3.5	4.5	5.5	25.2	29.8	115	95
28 x 32	6.3	5.3	7500	36000	88	6.33	3.5	3.5	4.5	5.5	28.2	31.8	115	100
30 x 35	6.3	5.3	8600	36000	91	6.08	3.5	3.5	4.5	5.5	30.2	34.8	100	85
32 x 36	6.3	5.3	7900	45000	131	8.24	3.5	3.5	4.5	5.5	32.2	35.8	130	115
35 x 40	7	6	10000	54000	171	9.77	3.5	3.5	4.5	5.5	35.2	39.8	125	110
36 x 42	7	6	11700	54000	169	9.39	3.5	3.5	4.5	5.5	36.2	41.8	115	100
38 x 44	7	6	11000	54000	181	9.55	3.5	3.5	4.5	5.5	38.2	43.8	110	95
40 x 45	8	6.6	13900	66000	231	11.57	3.5	4.5	5.5	6.5	40.2	44.8	115	105
42 x 48	8	6.6	15550	66000	235	11.22	3.5	4.5	5.5	6.5	42.2	47.8	110	95
45 x 52	10	8.6	26150	99000	353	15.71	3.5	4.5	5.5	6.5	45.2	51.8	105	95
48 x 55	10	8.6	24700	132000	572	23.84	3.5	4.5	5.5	6.5	48.2	54.8	155	135
50 x 57	10	8.6	23600	132000	602	24.08	3.5	4.5	5.5	6.5	50.2	56.8	150	130
55 x 62	10	8.6	21700	132000	670	24.35	3.5	4.5	5.5	6.5	55.2	61.8	140	125
56 x 64	12	10.4	29500	157200	790	28.2	3.5	4.5	5.5	7	56.2	63.8	130	115
60 x 68	12	10.4	27500	157200	860	28.6	3.5	4.5	5.5	7	60.2	67.8	125	110
63 x 71	12	10.4	26500	157200	910	28.8	3.5	4.5	5.5	7	63.2	70.8	120	105
65 x 73	12	10.4	25500	157200	950	29.2	3.5	4.5	5.5	7	65.2	72.8	115	100
70 x 79	14	12.2	31000	209600	1380	39.4	3.5	5	6.5	7.5	70.3	78.7	125	110
71 x 80	14	12.2	31000	209600	1400	39.4	3.5	5	6.5	7.5	71.3	79.7	120	110
75 x 84	14	12.2	34700	209600	1450	38.6	3.5	5	6.5	7.5	75.3	83.7	115	100
80 x 91	17	15	48000	290000	2200	55	4	6	6.5	8	80.3	90.7	125	105
85 x 96	17	15	45500	305000	2400	56.4	4	6	6.5	8	85.3	95.7	120	105
90 x 101	17	15	43600	320000	2730	60.5	4	6	6.5	8	90.3	100.7	120	105
95 x 106	17	15	41300	330000	3050	64.2	4	6	6.5	8	95.3	105.7	120	110
100 x 114	21	18.7	61000	445000	4200	84	5	6	7	9	100.3	113.7	120	105
110 x 124	21	18.7	66000	485000	5150	93.6	5	6	7	9	110.3	123.7	120	105
120 x 134	21	18.7	60300	510000	6050	100.8	5	6	7	9	120.2	133.7	120	105
130 x 148	28	25.3	96300	765000	9600	147.6	5	7	9	11	130.4	147.6	120	105
140 x 158	28	25.3	89000	800500	11000	158.5	6	7	9	11	140.4	157.6	120	105
150 x 168	28	25.3	85000	860000	12900	172	6	7	8	11	150.4	167.6	120	105
160 x 178	28	25.3	78600	900000	14600	182.5	6	7	9	11	160.4	177.6	120	110
170 x 191	33	30	117400	1160000	19500	229	7	9	10	12	170.5	190.5	120	105
180 x 201	33	30	111300	1200000	21300	236	7	9	10	12	180.5	200.5	120	105
190 x 211	33	30	105000	1260000	24200	255	7	9	10	12	190.5	210.5	120	110
200 x 224	38	34.8	134200	1550000	31000	310	7	8	11	13	200.6	223.4	120	105
210 x 234	38	34.8	127200	1610000	35000	333	7	9	11	13	210.6	233.4	120	110
220 x 244	38	34.8	122100	1690000	38000	345	7	9	11	13	220.6	243.4	120	110
230 x 257	43	39.5	164500	2000000	47000	408	7	10	12	14	230.6	256.4	120	105
240 x 267	43	39.5	157400	2250000	51000	425	7	10	12	14	240.6	266.4	120	110
250 x 280	48	44	190000	2060000	52000	415	7	10	13	16	250.8	279.2	100	89
260 x 290	48	44	182000	2132000	56500	435	7	10	13	16	260.8	289.2	100	89
270 x 300	48	44	177000	2207000	61000	450	7	10	13	16	270.8	299.2	100	89
280 x 313	53	49	206000	2536000	72500	520	7	11	14	17	280.8	312.2	100	89
290 x 323	53	49	222000	2632000	77500	535	7	11	14	17	290.8	322.2	100	89
300 x 333	53	49	214000	2704000	83000	555	7	11	14	17	300.8	332.2	100	89
320 x 360	65	59	292000	3492000	114000	710	10	15	20	25	321	359	100	89
340 x 380	65	59	272000	3672000	128500	755	10	15	20	25	341	379	100	89
360 x 400	65	59	258000	3858000	144000	800	10	15	20	25	361	399	100	90
380 x 420	65	59	269000	4069000	160500	845	10	15	20	25	381	419	100	90
400 x 440	65	59	256000	4256000	178000	890	10	15	20	25	401	439	100	90
420 x 460	65	59	244000	4444000	196000	935	10	15	20	25	421	459	100	90
440 x 480	65	59	234000	4633000	215000	980	10	15	20	25	441	479	100	90
460 x 500	65	59	224000	4824000	235000	1020	10	15	20	25	461	499	100	91
480 x 520	65	59	239000	5039000	256000	1070	10	15	20	25	481	519	100	91



Locking Assembly Model N8006-in

d X D	l	L	Total force Pa	Torque Mt	Distance W before tightening			Spacer sleeve	
					1	2	3	Inside d1	Outside D1
0.512 X 0.630	0.146	0.177	1793	8.53	0.08	0.80	0.12	0.516	0.626
0.551 X 0.709	0.209	0.248	2772	14.18	0.12	0.12	0.16	0.555	0.705
0.591 X 0.748	0.209	0.248	2970	16.27	0.12	0.12	0.16	0.594	0.744
0.630 X 0.787	0.209	0.248	3168	18.44	0.12	0.12	0.16	0.634	0.783
0.669 X 0.827	0.209	0.248	3366	20.90	0.12	0.12	0.16	0.673	0.823
0.709 X 0.866	0.209	0.248	3564	23.43	0.12	0.12	0.16	0.712	0.862
0.748 X 0.945	0.209	0.248	3762	26.04	0.12	0.12	0.16	0.756	0.937
0.787 X 0.984	0.209	0.248	3960	28.93	0.12	0.12	0.16	0.795	0.976
0.866 X 1.024	0.209	0.248	4356	34.72	0.12	0.12	0.16	0.874	1.015
0.945 X 1.102	0.209	0.248	4752	41.95	0.12	0.12	0.16	0.952	1.094
0.984 X 1.181	0.209	0.248	4950	44.84	0.12	0.12	0.16	0.992	1.173
1.102 X 1.260	0.209	0.248	5544	56.42	0.12	0.12	0.16	1.110	1.252
1.181 X 1.378	0.209	0.248	5940	65.10	0.12	0.12	0.16	1.189	1.370
1.260 X 1.417	0.209	0.248	6336	73.78	0.12	0.12	0.16	1.268	1.409
1.378 X 1.575	0.236	0.276	7832	99.82	0.12	0.12	0.16	1.386	1.567
1.417 X 1.654	0.236	0.276	8052	106.33	0.12	0.12	0.16	1.425	1.645
1.4986 X 1.732	0.236	0.276	8514	117.90	0.12	0.12	0.16	1.504	1.724
1.575 X 1.772	0.260	0.315	9900	143.94	0.12	0.16	0.20	1.583	1.764
1.654 X 1.890	0.260	0.315	10340	158.40	0.12	0.16	0.20	1.661	1.882
1.772 X 2.047	0.339	0.394	14520	237.24	0.12	0.16	0.20	1.779	2.039
1.890 X 2.165	0.339	0.394	15400	269.79	0.12	0.16	0.20	1.897	2.157
1.969 X 2.244	0.339	0.394	16060	292.94	0.12	0.16	0.20	1.976	2.236
2.165 X 2.441	0.339	0.394	17600	354.42	0.12	0.16	0.20	2.173	2.433
2.205 X 2.520	0.409	0.472	21780	444.83	0.12	0.16	0.20	2.212	2.512
2.362 X 2.677	0.409	0.472	23320	509.93	0.12	0.16	0.20	2.370	2.669
2.480 X 2.795	0.409	0.472	24420	564.17	0.12	0.16	0.20	2.488	2.787
2.559 X 2.874	0.409	0.472	25300	600.34	0.12	0.16	0.20	2.567	2.866
2.756 X 3.110	0.480	0.551	31900	810.10	0.12	0.20	0.24	2.768	3.098
2.795 X 3.150	0.480	0.551	32340	839.03	0.12	0.20	0.24	2.807	3.137
2.953 X 3.307	0.480	0.551	34100	933.06	0.12	0.20	0.24	2.964	3.295
3.150 X 3.583	0.591	0.669	44660	1309.17	0.16	0.20	0.24	3.161	3.570
3.346 X 3.780	0.591	0.669	47520	1475.53	0.16	0.20	0.24	3.358	3.767
3.543 X 3.976	0.591	0.669	50380	1656.36	0.16	0.20	0.24	3.555	3.964
3.740 X 4.173	0.591	0.669	53240	1844.42	0.16	0.20	0.24	3.752	4.161
3.937 X 4.488	0.736	0.827	69740	2546.02	0.16	0.24	0.28	4.342	4.870
4.331 X 4.882	0.736	0.827	76780	3074.03	0.16	0.24	0.28	4.342	4.870
4.724 X 5.276	0.736	0.827	83600	3652.67	0.16	0.24	0.28	4.736	5.263
5.118 X 5.827	0.996	1.102	122760	5822.57	0.20	0.28	0.35	5.134	5.811
5.512 X 6.220	0.996	1.102	132000	6762.86	0.20	0.28	0.35	5.527	6.204
5.906 X 6.614	0.996	1.102	141460	7739.31	0.20	0.28	0.35	5.921	6.598